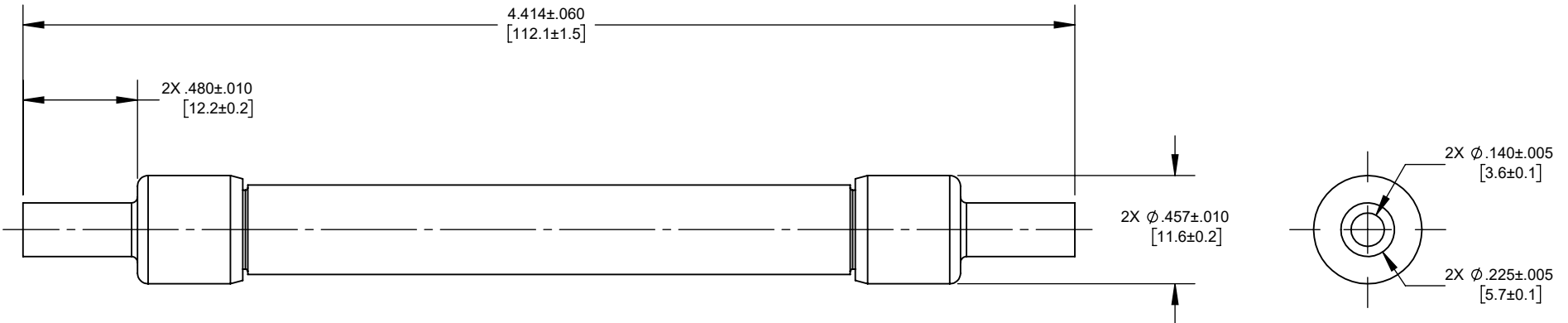
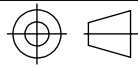


REV.	DATE	ECO	DESCRIPTION	BY	CK	APP
A	12/19/2023	18057	INITIAL RELEASE	LA	N/A	SEE ECO



OUTLINE DIMENSIONS  
NOT TO BE USED FOR PRODUCTION

DIMENSIONS IN [ ]  
ARE MILLIMETERS

Approval stage / Etat d'approbation: <b>APPROUVÉ POUR FABRICATION / APPROVED FOR MANUFACTURING</b>	Product Class:/ Product Type:	PV FUSE	
	Product amp rating:/ Voltage rating:	4-32A	1500VDC
Initial ECO / ECO intiale:	<b>ECO-18057-000</b>	Title / Titre:	Weight : Masse :
Draw by / Dessiné par: <b>Luis ARMENTA</b>	Date : <b>1/15/2024</b>	Drawing / de dessin: <b>OUT-242036</b>	
Checked by / Vérifié par: <b>Alma Balcazar</b>	Date : <b>1/15/2024</b>		
Electrical Power 374 MERRIMAC STREET NEWBURYPORT, MA 01950	Éch / Scale : <b>1.5:1</b> Format / Size : <b>A</b>	Part / Article: <b>SEE TABLE</b>	Page : 1/1

**OUTLINE  
HP15M(4-32)RCC**

Rev : **A**  
Rév :

**MERSEN**

Ce plan strictement confidentiel est la propriété exclusive de la société MERSEN sans l'autorisation écrite de laquelle il ne peut être ni reproduit, ni copié, ni communiqué à des tiers.  
This drawing and specifications there on is property of MERSEN and shall not be reproduced or copied or used in whole or in part as the base for manufacture or sale of item without written permission.

HP15M32RCC
HP15M30RCC
HP15M25RCC
HP15M20RCC
HP15M15RCC
HP15M12RCC
HP15M10RCC
HP15M8RCC
HP15M7RCC
HP15M6RCC
HP15M5RCC
HP15M4RCC
CATALOG NUMBER