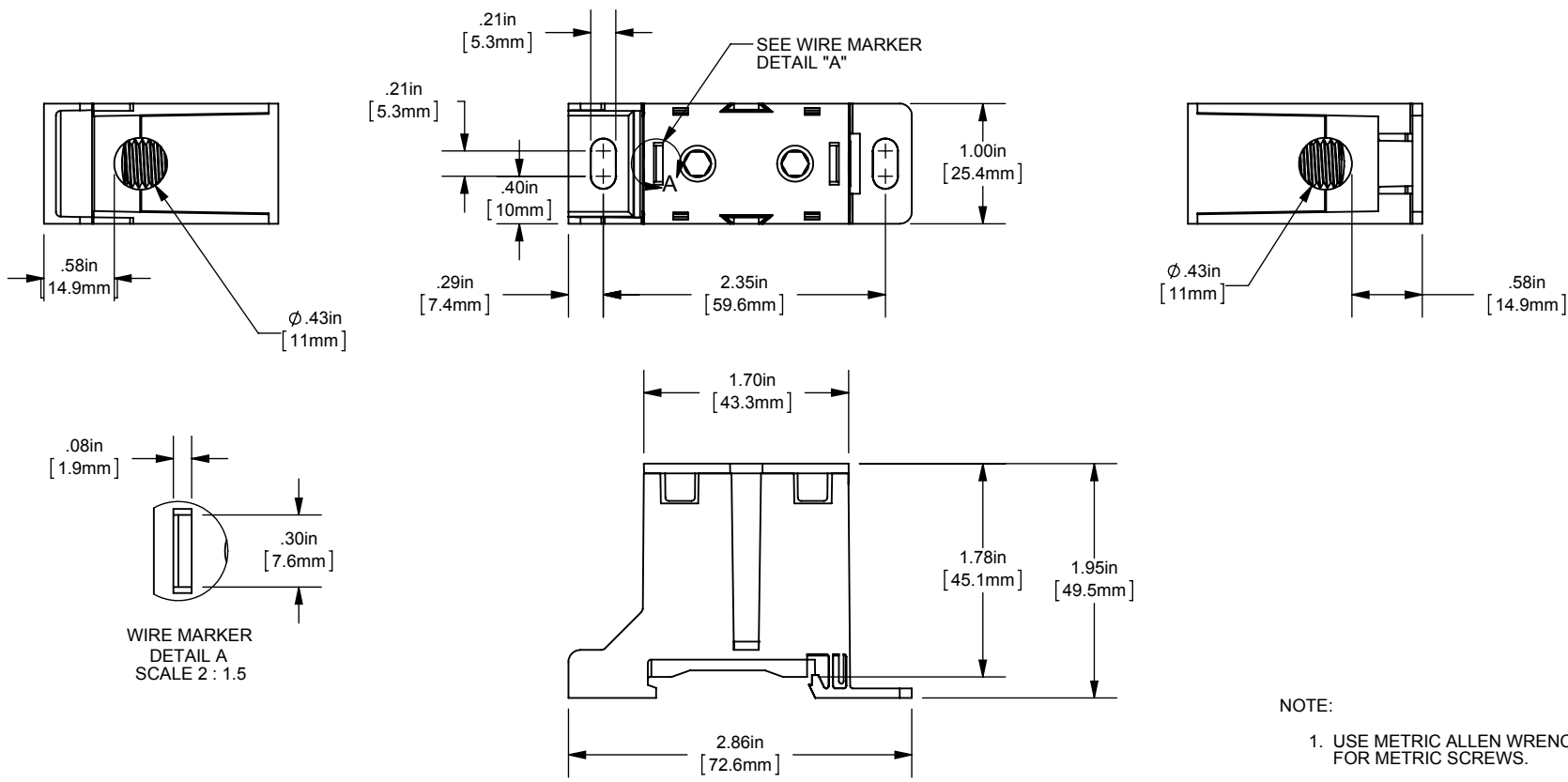


REV.	DATE	ECO	DESCRIPTION	BY	CK	APP
C	8/20/2013	N/A	REDRAWN	GDR	N/A	N/A



APPROUVÉ POUR FABRICATION / APPROVED FOR MANUFACTURING

P/N	CONN. MAT'L	AMP RATING	LINE				LINE				UL		CSA	
			RANGE	TORQUE	RANGE	TORQUE	RANGE	TORQUE	RANGE	TORQUE	FILE #	GUIDE #	FILE #	GUIDE #
			AWG/kcmil	in/lbs	mm <sup>2</sup>	N - m	AWG/kcmil	in/lbs	mm <sup>2</sup>	N - m				
FSPDB1A	AL	175	2/0-#14	2/0-#1 100 #2-#6 80 #8-#14 35	70-2.5	70-50 11.4 35-16 9 10-2.5 3.9	2/0-#14	2/0-#1 100 #2-#6 80 #8-#14 35	70-2.5	70-50 11.4 35-16 9 10-2.5 3.9	E73571	XCFR2	69363	6228
FSPDB1B	Cu	175	2/0-#14	2/0-#1 100 #2-#6 80 #8-#14 35	70-2.5	70-50 11.4 35-16 9 10-2.5 3.9	2/0-#14	2/0-#1 100 #2-#6 80 #8-#14 35	70-2.5	70-50 11.4 35-16 9 10-2.5 3.9	E73571	XCFR2	69363	6228

NOTE:  
1. USE METRIC ALLEN WRENCH FOR METRIC SCREWS.

DIMENSIONS IN [ ] ARE MILLIMETERS



MERSEN USA NEWBURYPORT-MA, LLC  
374 MERRIMAC STREET  
NEWBURYPORT, MA 01950

FINGER-SAFE  
POWER DISTRIBUTION B LOCK

600V  
(1)2/0-#14 X (1)2/0-#14  
(1)70-2.5mm<sup>2</sup> X (1)70-2.5mm<sup>2</sup>

OUTLINE DIMENSIONS  
NOT TO BE USED FOR PRODUCTION

700900

PRODUCT MANAGER: SIGN: DATE:  
DESIGN ENGINEER: SIGN: DATE: (SEE ECO)